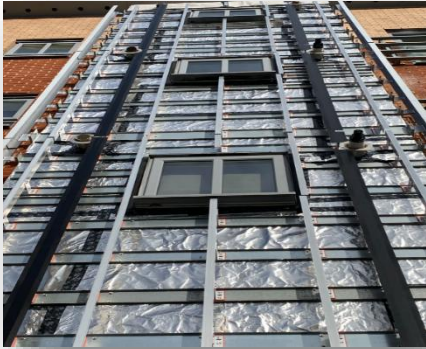


Statement from Courtney Greatorex - Resident Liaison Officer at Bedford and Leicester Courts - Moor Lane & Cregg Lane, Preston

We are pleased to inform you that Starfish Construction has been appointed by **Miller Homes** to carry out the works at **Bedford and Leicester Courts**.

Please find below the latest updates regarding the reinstatement works and onsite activities scheduled for the week commencing **Monday 4rd March 2026**.



News & Updates

Weekly Site Progress Update

The team has continued to make strong, coordinated progress across all towers this week, with several elevations advancing through key stages of the facade removal and rebuild process. Works are moving steadily and safely, and your continued patience is helping us maintain this positive momentum on site.

Upcoming Works Week Commence 02.03.2026 Looking ahead into the week, the team will be progressing with the following activities:

Elevation B – Towers 1, 2 & 3

- You'll see the team continuing their work on Elevation B, where cladding and frames have now been fully removed. The Y-wall and silicone layers are in place, and the team has also installed the EPDM, Obex membrane, C-sections, brackets and front rails. Steel sleeve installation is progressing well at around 75%. Fire barrier and insulation works have now begun, currently reaching approximately 15%. Despite the strong winds, the team has kept activity running smoothly.

Elevation C – Towers 1, 2 & 3

- On Elevation C, you may notice steady progress as the team continues working through the facade build-up. Cladding and frames have been removed, and the Y-wall and silicone installation is complete. EPDM, Obex membrane, C-sections, brackets and front rails are also in place. Steel sleeves are around 75% complete, and fire barrier and insulation works are progressing well, now reaching approximately 75%. The team is working hard to keep momentum despite the challenging weather.

Elevation D – Towers 1, 2, 3 & 4

- Works are moving forward across all towers on Elevation D. Cladding and frames have been removed, and the Y-wall and silicone layers are now installed. EPDM, Obex membrane, C-sections, brackets and front rails are also in place. Steel sleeves are progressing at around 75%, with fire barrier and insulation works underway and currently at approximately 25%. You'll continue to see the team on this elevation as they push ahead with the next stages.

Elevations A1 & A2

- On Elevations A1 and A2, cladding and frames have been removed, and the Y-wall and silicone installation is complete. EPDM, Obex membrane and C-sections are now in place, forming the base for the upcoming facade works. The team will remain active in this area as the next stages begin.

News & Updates

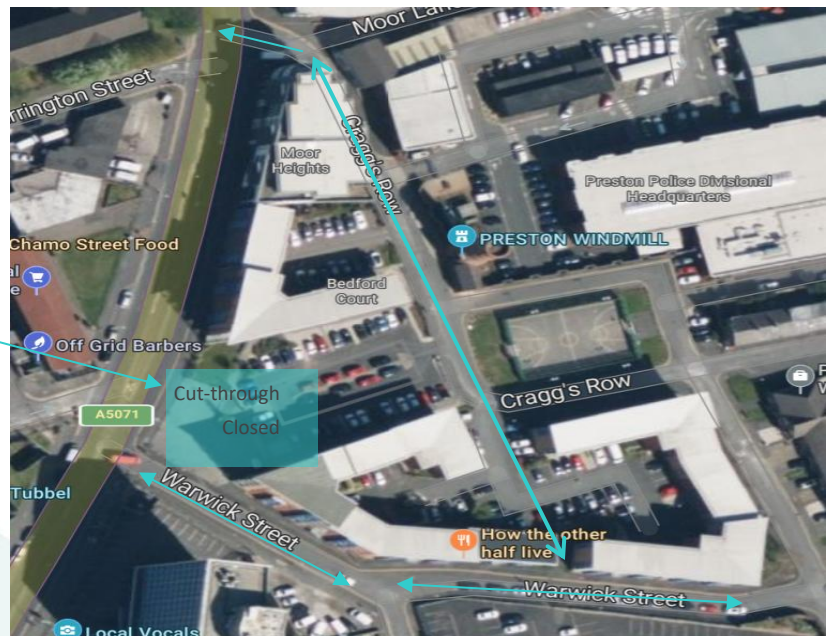


Our Welfare unit is located on the front entrance to the car park area between Bedford and Leicester Court



News & Updates

Due to the cut-through patch currently being closed, please follow the directions shown on the diagram to access the main road,





Contact information



Resident Liaison Officer

Name: Courtney Greatorex

Telephone: 07939 894015

Email: CGreatorex@starfishltd.com

Working hours: 8am-5:00pm



Site Manager

Name: Daniel Horwood

Telephone: 07940 022295

Email: dhorwood@starfishltd.com

Working hours: 8am-5:00pm